



SPARE PARTS LIST
HTC 800 Classic

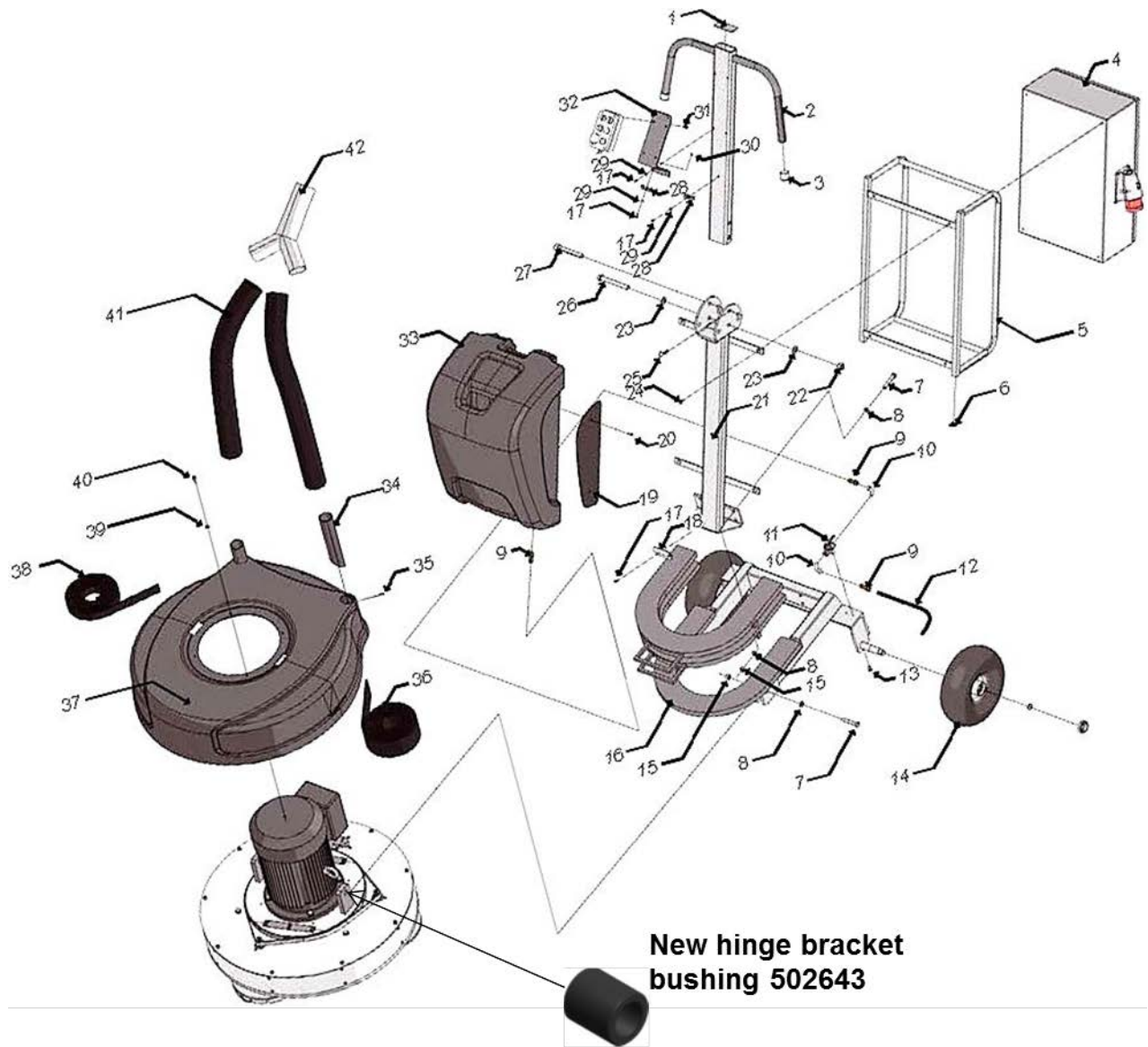




Table of contents

HTC 800C Chassis..... 2
HTC 800C Grinding head 5
HTC 800C Belt tensioner - 593522001..... 8
HTC 800C Belt tensioning kit..... 9
HTC 800C Grinding holder cardan - 593439001..... 10
HTC 800C EU Electrical - 595633201..... 12
HTC 800C US Electrical – 593628801..... 14

HTC 800C Chassis



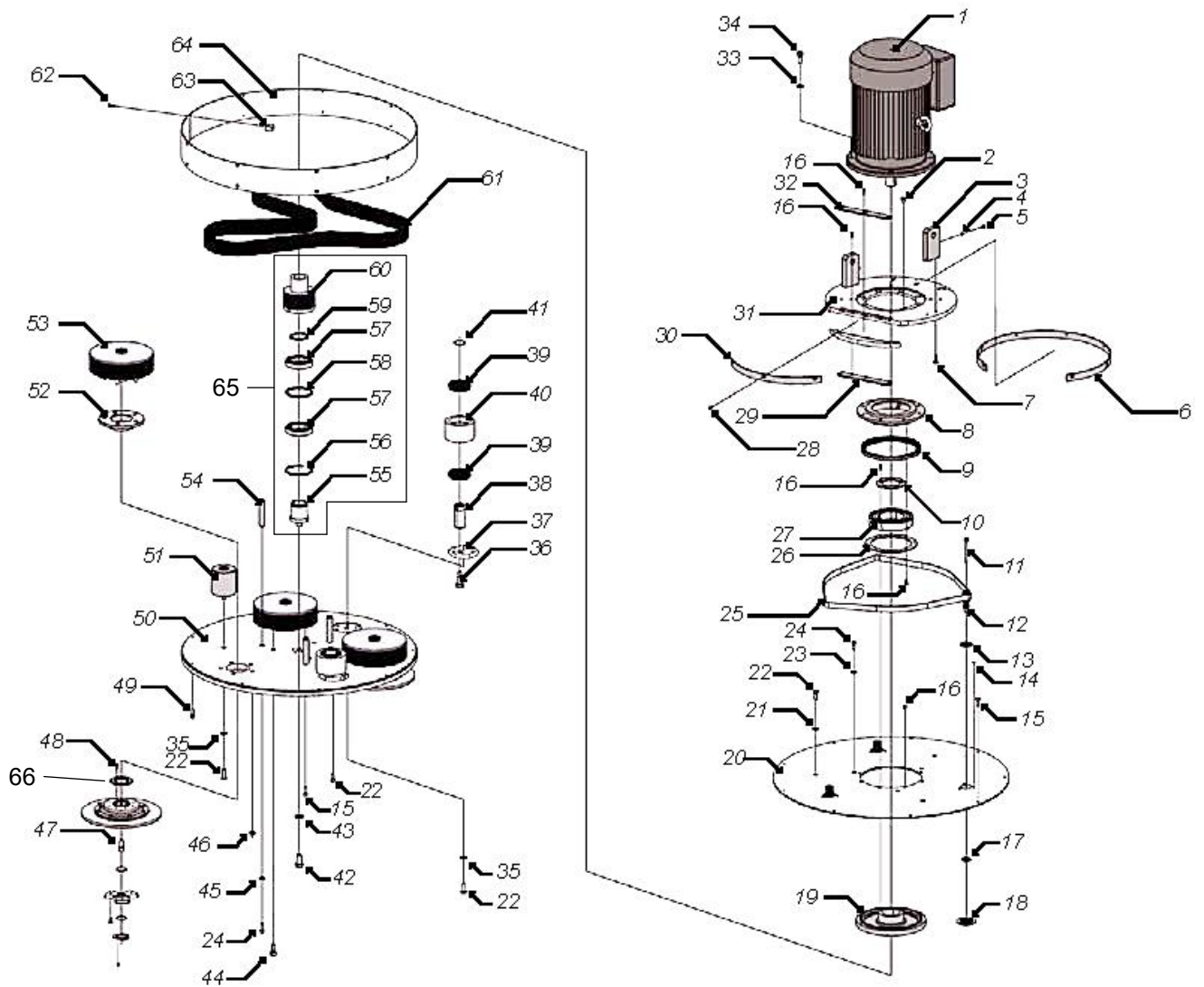
HTC 800C Chassis

Item	Description	Part no	Qty
1	RECTANGULAR INSERT 80x40	593401001	1
2	CHASSIS HANDLE POS.3 INCLUDED	593384101	1
3	CAP FOR HANDLE	593625501	2
4	POWER UNIT 11KW EU	595633201	1
	POWER UNIT 11KW US	593628801	1
5	PROTECTION CAGE	595801301	1
6	RECTANGULAR INSERT 20x20	593509701	4
7	SCREW M12x65	593497701	4
8	WASHER M12	593499401	4
9	TUBE CONNECT.2601-12-1/4	593391601	3
10	L-TUBE-IU 2020-1/4	593389601	2
11	WATER TAP	593381001	1
12	HOSE COARSE ARMOURED	593388601	1
13	SCREW M5x16	310238	2
14	WHEEL BLACK	593397301	2
	WHEEL GREY	593468801	2
15	NUT LOCK M12	593495301	4
16	BASE WEIGHT 20KG	593400201	1
	EXTRA WEIGHT 20KG	593400301	2
	VELCRO CLOSING 59/15 FEMALE	210057	6
17	SCREW M6X12	593497301	6
18	WATER TANK BRACKET	593384501	1
19	SIDE PANEL	593430501	2
20	SCREW THERMOPLASTIC	593502601	4

HTC 800C Chassis

Item	Description	Part no	Qty
21	CHASSIS POLE	593384301	1
	CHASSIS BOTTOM PART	595805901	1
22	NUT LOCK M16	593497601	1
23	WASHER M16	593497501	2
24	SCREW M8x25	593501701	4
25	LOCKING CLIP	593501501	1
26	SCREW M16x120	593497401	1
27	PIN CHASSI	593384401	1
28	CLIP JR10	593396501	2
29	WASHER M6	593496001	6
30	NUT LOCK M6	593500001	1
31	SCREW RXS 5,5x19	595671801	4
32	BRACKET CONTROL PANEL	593384201	1
33	WATER TANK	593429201	1
34	EXTRACTOR, GRINDING COVER	593430201	2
35	POP RIVET 4.8x12.7	593500801	4
36	SPLASH GUARD HTC800EZ 3MX100MM	593388801	1
37	COVER HTC 800 CLASSIC	593524601	1
38	VELCRO CLOSING MALE 38MM	593615501	3M
39	WASHER M8	593500401	6
40	SCREW M8X16	593499601	4
41	HOSE 51MM 2" ANTISTATIC BLACK	593478501	1
42	FORK PIPE 79-50X50 HOOK	10077	1
42	FORK PIPE 76-50X50 CAMLOCK THREAD	593454101	1
	CAMLOCK MALE INNER THREAD	593457501	1

HTC 800C Grinding head



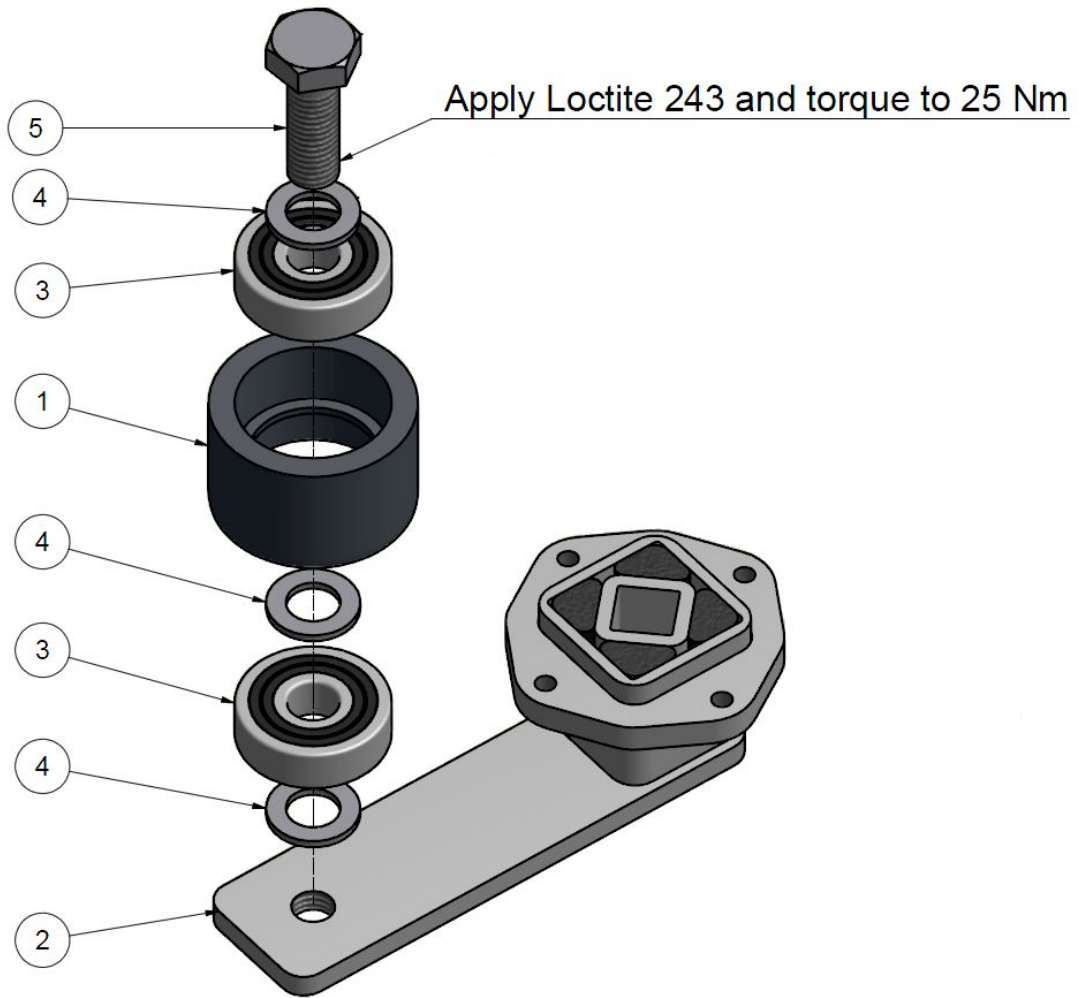
HTC 800 Grinding head

Item	Description	Part no	Qty
1	MOTOR 11kW	593398701	1
1	MOTOR 7.5kW	593480001	1
2	SCREW M10x16	593507601	8
3	HINGE BRACKET	593384601	2
4	NUT M6	593505501	2
5	SCREW M6x10	593495401	2
6	BORDER MOTOR PLATE 3/4	593432101	2
7	SCREW M8x25	593497901	4
8	BEARING CUP	593427701	1
9	RADIAL SEAL 175x200	593429501	1
10	BEARING COVER	593428401	1
11	SCREW M8x80	593507201	3
12	SHAFT TAP	593428501	3
13	GAMMA RING	593411601	3
14	SCREW M5x12	593502101	9
15	SCREW M8x20	593502801	17
16	SCREW M6x20	593496701	19
17	RADIAL SEAL 20x30	593411501	3
18	SPACER	593410301	3
19	BEARING HUB	593427801	1
20	UPPER LID	593428801	1
21	WASHER M10	593498501	6
22	SCREW M10x30	593499701	3
23	WASHER M8	593500401	3
24	SCREW M8x20	593503701	6
25	UPPER BELT POLY-V	593429601	1
26	BEARING COVER	593428301	1
27	BALL BEARING 6217	593429301	1
28	SCREW M6x16	310251	12
29	BRACKET PLATE LOWER	593429101	2
30	BORDER MOTOR PLATE 1/4	593429001	2
31	MOTOR PLATE 3/4	593431401	1
	MOTOR PLATE 1/4	593428701	1
32	BRACKET PLATE, UPPER	593627201	2

HTC 800C Grinding head

Item	Description	Part no	Qty
33	WASHER M12	593499401	4
34	SCREW M12x30	593501601	4
35	WASHER M10	593498501	6
36	SHOULDER SCREW 16xM12x25	593503301	2
37	PRESS WHEEL PLATE	593410901	2
38	PRESS WHEEL SHAFT	593427601	2
39	BALL BEARING 6207	593385101	4
40	PRESS WHEEL	593535801	2
41	CIRCLIP SGA 35	593498101	2
42	SCREW M16x30	593503501	1
43	WASHER M16	593497501	1
44	SCREW M16x20	593505701	3
45	WASHER M8	593500401	4
46	NUT M14	593503401	15
47	SCREW M12x25	593503601	3
48	CYLINDER PIN 6x20	593498901	18
49	SCREW M8x25	593499601	9
50	LOWER PLATE	593428601	1
51	COUNTERWEIGHT	593427401	1
52	HUB SPACER	593410101	3
53	HUB PACKAGE	593434801	3
54	SHAFT SPACER	593427301	3
55	SHAFT CENTERPULLEY	593427901	1
56	CIRCLIP SGH 90	593507101	1
57	BALL BEARING 6011	593429401	2
58	SPACER RING	593428201	1
59	CIRCLIP SCA 55	593507001	1
60	CENTER PULLEY	593428001	1
61	INNER BELT POLY-V	593429701	1
62	SCREW M6x20	593505101	18
63	FIXING BOSS	593410201	18
64	BORDER HTC 800 CLASSIC	593428901	1
65	CENTER PULLEY COMPLETE	593477901	1
66	NILOS RING 45x75 LSTO	593412301	1

HTC 800C Belt tensioner - 500981



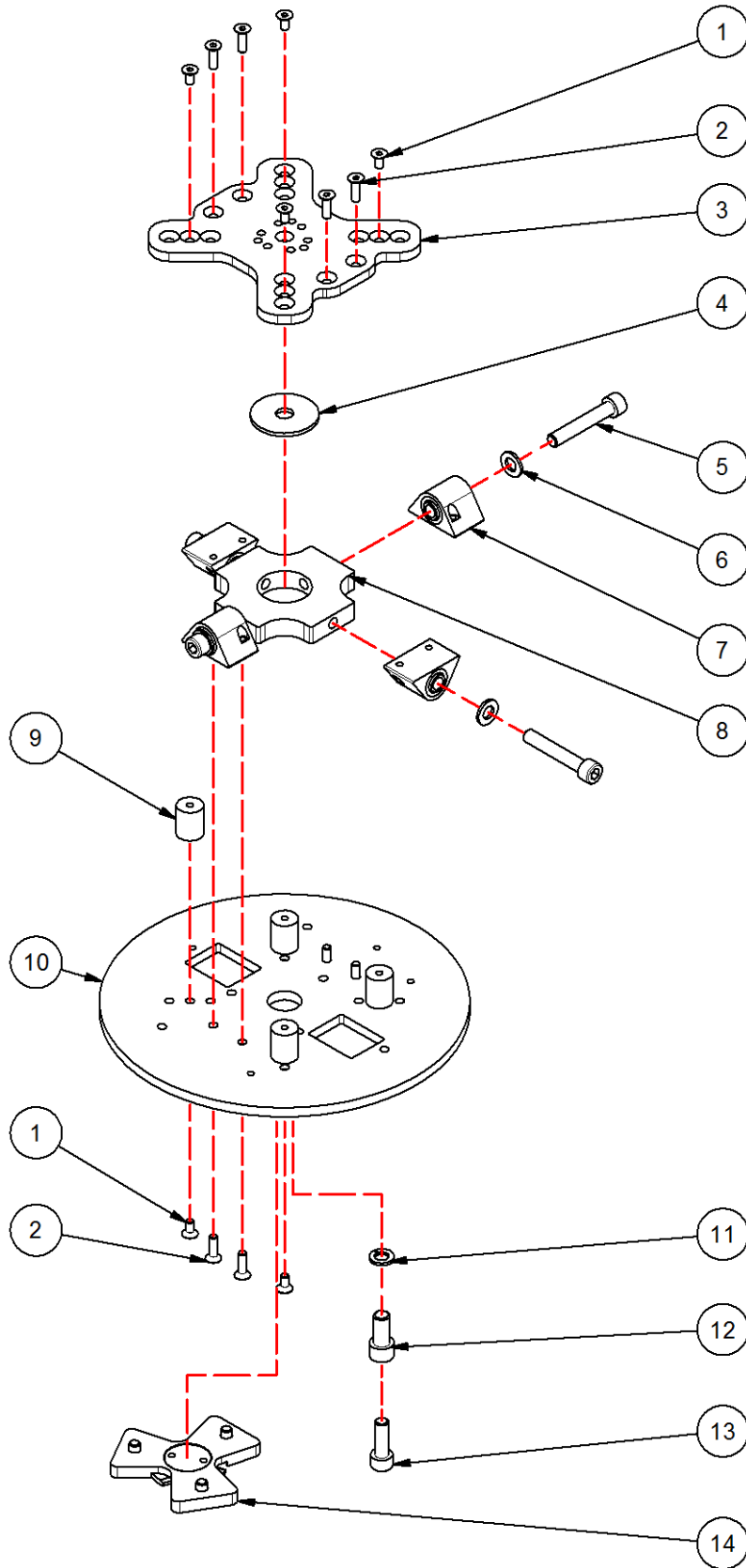
Item	Description	Part no	Qty
1	TENSIONER ROLLER	595696201	1
2	TENSIONER ARM	595696301	1
3	BALL BEARING 6200	595635801	2
4	WASHER M10	593511501	3
5	SCREW M10x30	593499701	1

HTC 800C Belt tensioning kit



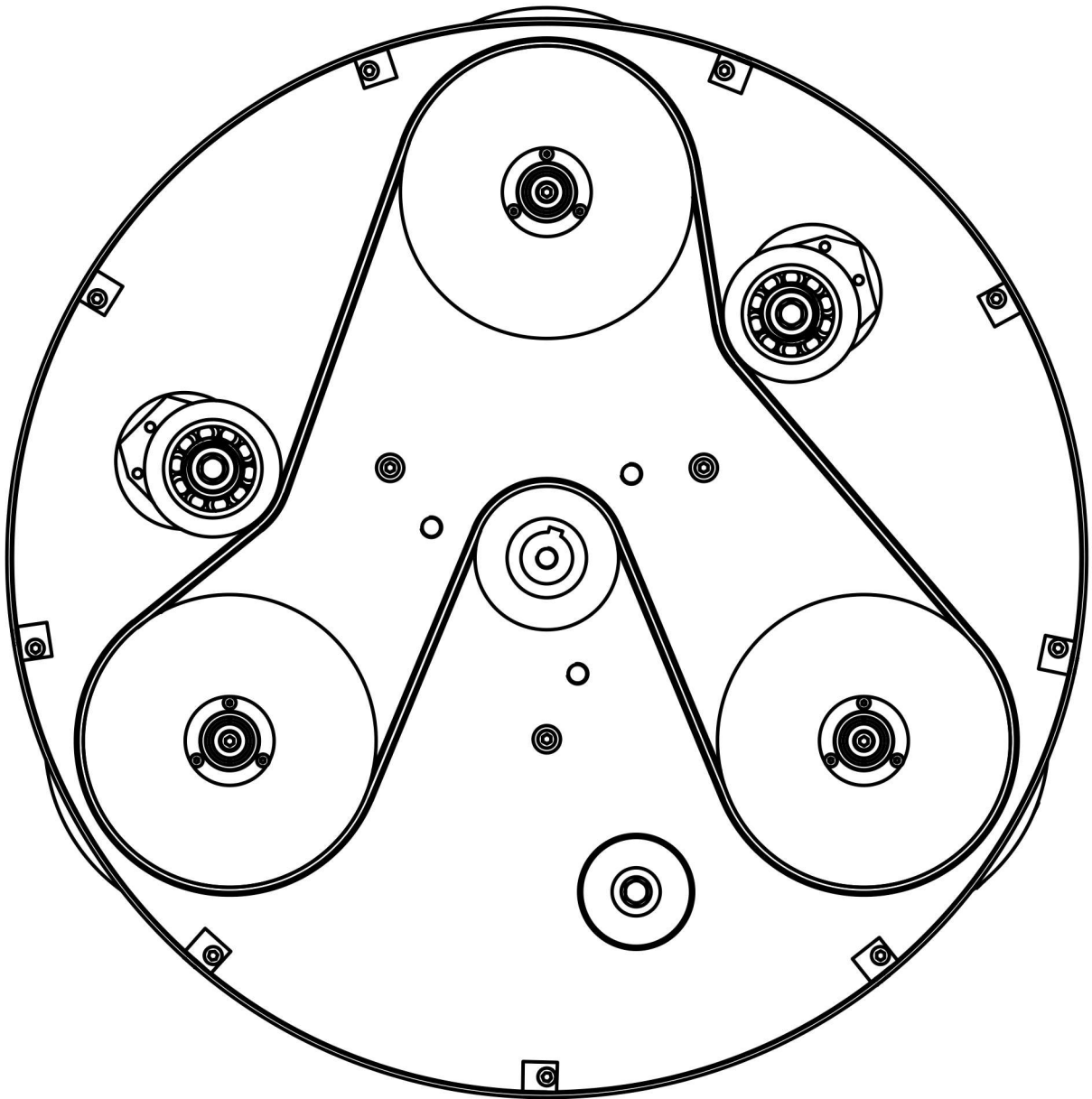
Item	Description	Part no	Qty
1	BELT TENSIONING PLATE	593630901	1
2	BELT TENSIONER	593522001	2
3	WASHER M10	593499101	3
4	SCREW M10x30	593499701	3
5	SCREW M5x16	593502301	11

HTC 800C Grinding holder cardan - 112251



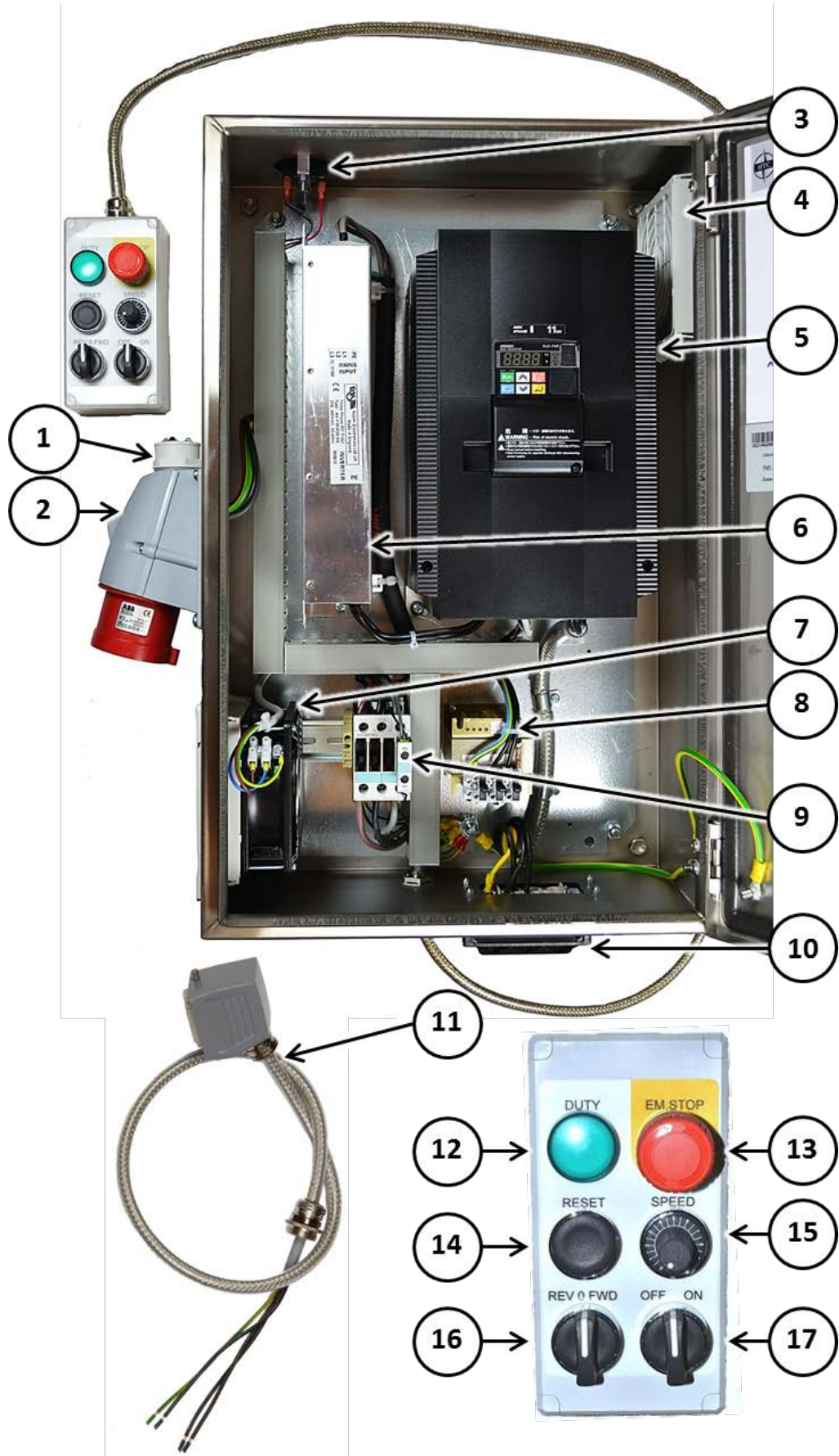
HTC 800C Grinding holder cardan - 112251

Item	Description	Part no	Qty
1	SCREW M6x12	593508501	8
2	SCREW M6x20	593505101	8
3	UPPER GRIND HOLDER PLATE	593438201	1
4	WASHER	593438601	1
5	SCREW M10x60	593496601	4
6	WASHER M10	593499101	4
7	EAR WIDE COMPLETE	593718101	4
8	CARDAN CONNECTION	593438401	1
9	SHOCK ABSORBER 20x25 M6	595748401	4
10	GRIND HOLDER PLATE	593438501	1
11	WASHER M12	593509901	1
12	SCREW M12x25	593503601	1
13	SCREW M10x30	593504101	1
14	CROSS COMPLETE	593615901	1



BELT ORIENTATION - HTC 800 CL

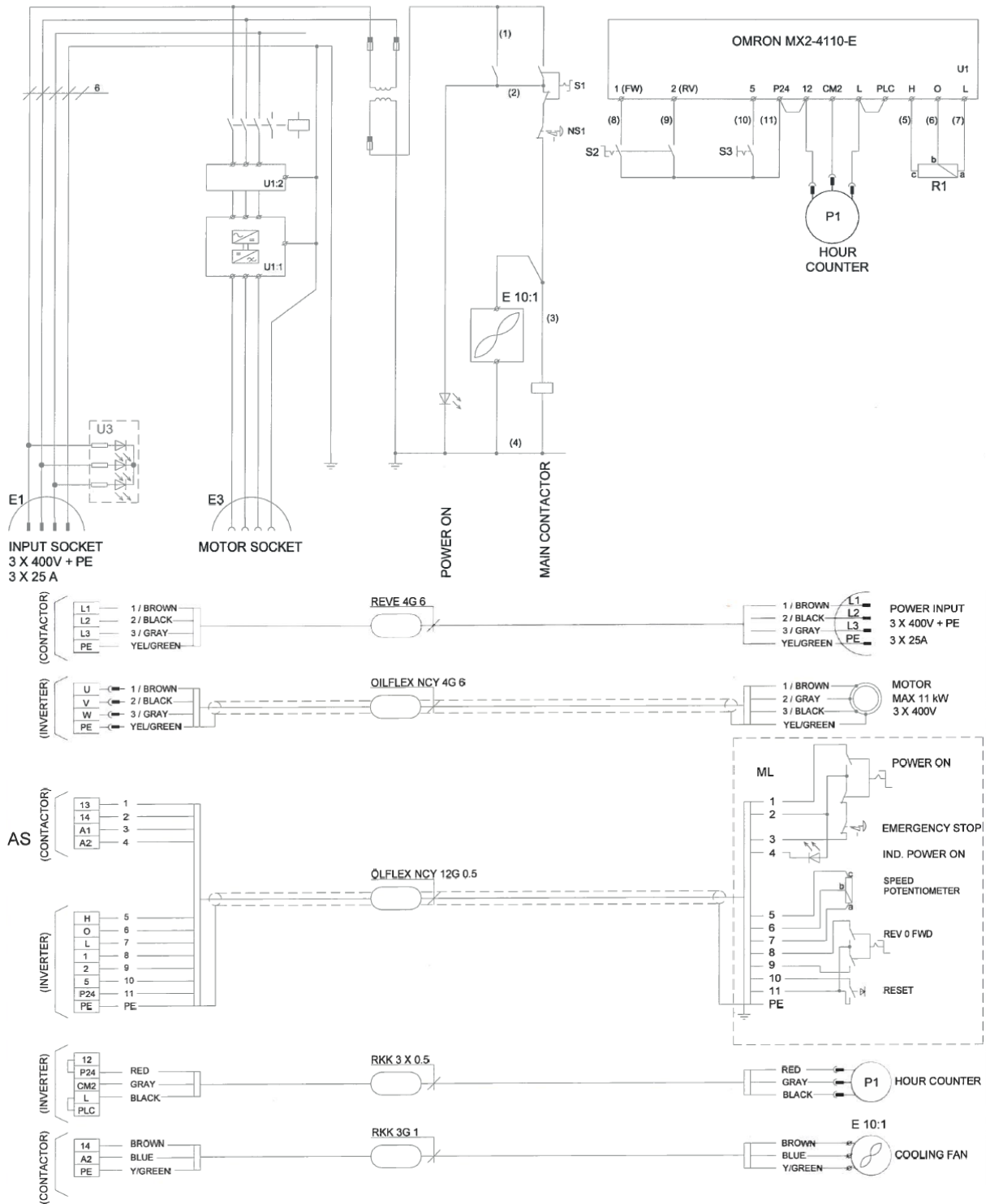
HTC 800C EU Electrical - 113073



HTC 800C EU Electrical – 113073

Item	Description	Part no	Qty
1	PHASE INDICATOR	593379101	1
2	POWER INLET	593400101	1
3	HOUR METER	593395301	1
4	FILTER HOLDER	593405301	1
5	INVERTER	593457201	1
6	EMC - FILTER	593467301	1
7	FILTER FAN	593468001	1
	FILTER HOLDER	593405301	1
8	TRANSFORMER	593380601	1
	FUSE 0.4A	595807401	3
9	CONTACTOR	593416501	1
	AUXILIARY SWITCH	595807301	1
10	MOTOR CABLE INLET	595736801	1
11	MOTOR CABLE	593405901	1
12	LENS HEAD (GREEN)	593399501	1
	MOUNTING BASE	593614901	1
	LIGHT BLOCK	595785701	1
13	EMERGENCY STOP PRESS BUTTON	593398901	1
	MOUNTING BASE	593614901	1
	CONTACT BLOCK (NC)	593399701	1
14	PRESS BUTTON (RESET)	593399401	1
	MOUNTING BASE	593614901	1
	CONTACT BLOCK (NO)	593399601	1
15	POTENTIOMETER KNOB	593420701	1
	POTENTIOMETER	593398501	1
16	KNOB 3-POS (REV/FWD)	593399301	1
	MOUNTING BASE	593614901	1
	CONTACT BLOCK (NO)	593399601	1
17	KNOB 3-POS (OFF/ON)	593398201	1
	MOUNTING BASE	593614901	1
	CONTACT BLOCK (NO)	593399601	1
	CONTACT BLOCK (NC)	593399701	1

MODIFIED PARAMETERS					
MENUE	PARAMETER	VALUE	MENUE	PARAMETER	VALUE
F002	ACC. (1) TIME	4S	C004	TERMINAL (4) FUNC.	13: USP
F003	DEC. (1) TIME	4S	C005	TERMINAL (5) FUNC.	18: RS
A004	MAX FREQ.	90Hz	C014	TERMINAL (4) ACT.	1: NC
A011	POT./ O-L ACTIVE	20Hz	C021	TERMINAL (11) FUNC.	3: O-L
A012	POT./ O-L ACTIVE	90Hz	C022	TERMINAL (12) FUNC.	0: RUN
A044	V/F CHARACTER	3: SLV	C026	ALARM R. TERM	0: RUN
b002	ALLOW. U-VOLT	5.0 SEC	C041	O-L LEVER	23 A
b022	O-L RESTRICTION	34 A	H005	TBD	10
b092	COOLING FAN	0: ON	b031	SOFT LOCK	02



HTC 800C US Electrical – 113038

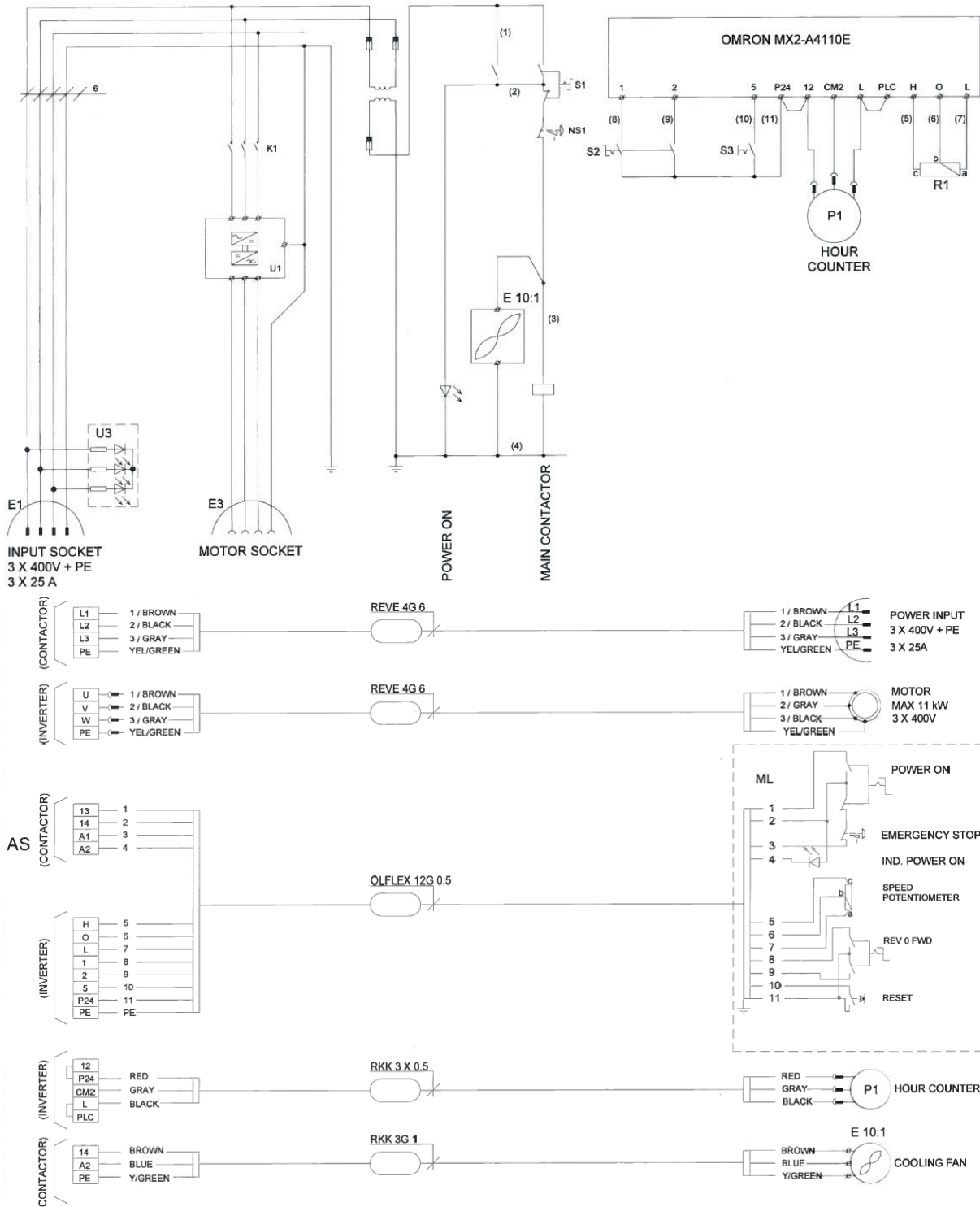


HTC 800C US Electrical – 113038

Item	Description	Part no	Qty
1	PHASE INDICATOR	593379101	1
2	POWER INLET	593401301	1
3	HOUR METER	593395301	1
4	FILTER HOLDER	593405301	1
5	INVERTER	593457201	1
6	FILTER FAN	593468001	1
	FILTER HOLDER	593405301	1
7	TRANSFORMER	593380601	1
	FUSE 0.4A	595807401	3
8	CONTACTOR	593416501	1
	AUXILIARY SWITCH	595807301	1
9	MOTOR CABLE INLET	595737101	1
10	MOTOR CABLE	593401701	1
11	LENS HEAD (GREEN)	593399501	1
	MOUNTING BASE	593614901	1
	LIGHT BLOCK	595785701	1
12	EMERGENCY STOP PRESS BUTTON	593398901	1
	MOUNTING BASE	593614901	1
	CONTACT BLOCK (NC)	593399701	1
13	PRESS BUTTON (RESET)	593399401	1
	MOUNTING BASE	593614901	1
	CONTACT BLOCK (NO)	593399601	1
14	POTENTIOMETER KNOB	593420701	1
	POTENTIOMETER	593398501	1
15	KNOB 3-POS (REV/FWD)	593399301	1
	MOUNTING BASE	593614901	1
	CONTACT BLOCK (NO)	593399601	1
16	KNOB 3-POS (OFF/ON)	593398201	1
	MOUNTING BASE	593614901	1
	CONTACT BLOCK (NO)	593399601	1
	CONTACT BLOCK (NC)	593399701	1

MODIFIED PARAMETERS

MENUE	PARAMETER	VALUE	MENUE	PARAMETER	VALUE
F002	ACC. (1) TIME	4S	C004	TERMINAL (4) FUNC.	13: USP
F003	DEC. (1) TIME	4S	C005	TERMINAL (5) FUNC.	18: RS
A004	MAX FREQ.	90Hz	C014	TERMINAL (4) ACT.	1: NC
A011	POT./ O-L ACTIVE	20Hz	C021	TERMINAL (11) FUNC.	3: O-L
A012	POT./ O-L ACTIVE	90Hz	C022	TERMINAL (12) FUNC.	0: RUN
A044	V/F CHARACTER	3: SLV	H005	TBD	10
b002	ALLOW. U-VOLT	5.0 SEC	b031	SOFT LOCK	02
b022	O-L RESTRICTION	34 A			
b092	COOLING FAN	0: ON			



MODIFIED PARAMETERS					
MENUE	PARAMETER	VALUE	MENUE	PARAMETER	VALUE
A004	MAX. FREQ.	90	B083	CARRIER FREQ. SET.	8.0
A011	POT./O-L FREQ.	20	B085	COUNTRY INITIAL.	0
A012	POT./O-L FREQ.	90	C004	TERMINAL 4 (FUNC)	13: USP
A082	AVR. VOLTAGE	0:200V	C014	TERMINAL 4 (ACT)	1: NC
A282	AVR. VOLTAGE	0:200V	F001	OUTPUT FREQ.	46.00
B022	OVERLOAD LEVEL	47.99	F002	ACC. TIME SET.	4.00
B031	SOFT LOCK	2 (ON)	F003	DEC. TIME SET.	4.00

